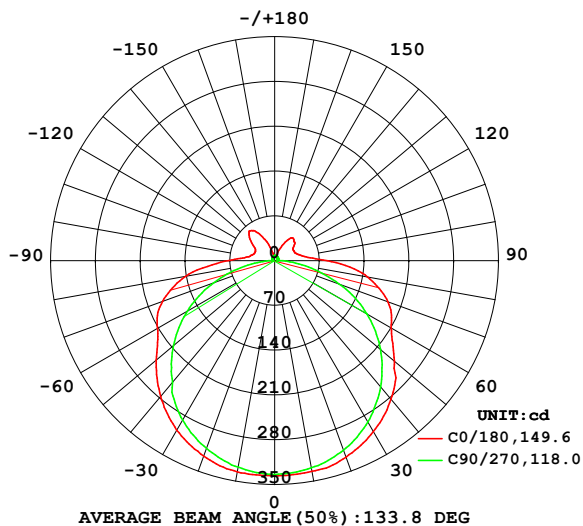


## LUMINAIRE PHOTOMETRIC TEST REPORT

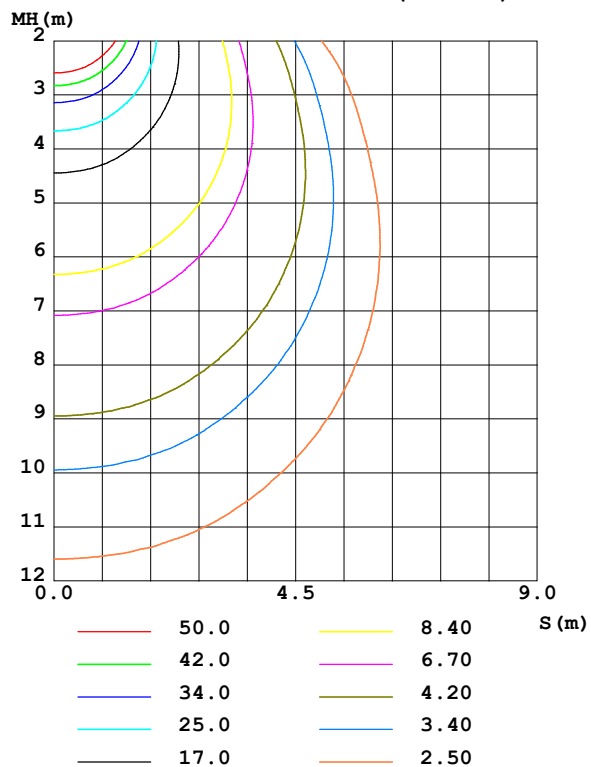
Test:U:100.30V I:0.1630A P:14.500W PF:0.8820 Freq:50.00Hz Lamp Flux:1334.11x1 lm		
NAME:	TYPE:	WEIGHT:
SPEC.:	DIM.:	SERIAL No.:
MFR.: Everfine	SUR.:	Shielding Angle:

DATA OF LAMP		PHOTOMETRIC DATA				Eff: 92.01 lm/W
MODEL	线条灯5000K	I <sub>max</sub> (cd)	336.3	S/MH(C0/180)	1.37	
NOMINAL POWER(W)	15	LOR(%)	100.0	S/MH(C90/270)	1.30	
RATED VOLTAGE(V)	100	TOTAL FLUX(lm)	1334.1	η UP,DN(C0-180)	5.6,43.9	
NOMINAL FLUX(lm)	1334.11	CIE CLASS	SEMI-D.	η UP,DN(C180-360)	5.3,45.2	
LAMPS INSIDE	1	η up (%)	10.9	CIBSE SHR NOM	1.50	
TEST VOLTAGE(V)	100	η down (%)	89.1	CIBSE SHR MAX	1.50	

LUMINOUS INTENSITY DISTRIBUTION DIAGRAM



C0 PLANE ISOLUX DIAGRAM (UNIT:lx)



C Range: 0 - 360DEG  
C Interval: 90.0DEG  
Test Speed: HIGH  
Temperature:25.3℃  
Operators:DAMIN  
Test Date:26 November 2025

γ Range: 0 - 180DEG  
γ Interval: 1.0DEG  
Test System:EVERFINE GO-2000B\_V1 SYSTEM V2.00.459  
Humidity:65.0%  
Test Distance:8.186m [K=1.0000]  
Remarks:

## ZONAL FLUX DIAGRAM

### ZONAL FLUX DIAGRAM:

$\gamma$	C0	C90	C180	C270					$\gamma$	$\Phi$ zone	$\Phi$ total	%lum, lamp
10	335.1	327.7	334.4	328.8					0- 10	31.82	31.82	2.38,2.38
20	324.9	312.1	327.2	315.3					10- 20	92.44	124.3	9.31,9.31
30	306.1	287.9	308.7	291.0					20- 30	143.1	267.3	20,20
40	277.4	248.5	283.1	257.7					30- 40	177.8	445.1	33.4,33.4
50	241.7	206.6	244.2	216.1					40- 50	191.4	636.5	47.7,47.7
60	211.6	157.5	210.4	166.4					50- 60	184.7	821.2	61.6,61.6
70	186.6	101.4	188.7	107.5					60- 70	166.1	987.3	74,74
80	141.3	42.82	147.6	48.80					70- 80	127.7	1115	83.6,83.6
90	72.86	5.598	82.09	6.386					80- 90	73.55	1189	89.1,89.1
100	40.20	3.763	43.75	4.599					90-100	32.63	1221	91.5,91.5
110	33.94	4.467	35.05	5.136					100-110	22.31	1244	93.2,93.2
120	34.71	5.018	33.91	5.594					110-120	19.39	1263	94.7,94.7
130	49.43	5.603	41.70	6.122					120-130	19.83	1283	96.2,96.2
140	61.10	6.285	45.68	6.571					130-140	21.68	1304	97.8,97.8
150	48.88	6.945	33.74	6.892					140-150	17.57	1322	99.1,99.1
160	26.43	7.439	9.020	7.324					150-160	8.665	1331	99.7,99.7
170	7.983	7.966	7.676	7.640					160-170	2.701	1333	99.9,99.9
180	7.896	8.125	7.918	8.129					170-180	0.7493	1334	100,100
DEG	LUMINOUS INTENSITY:cd									UNIT:lm		

Conical surface Flux(90deg): 540.5 lm

%lum = 40.5%

%lamp = 40.5%

Conical surface Flux(120deg): 821.21 lm

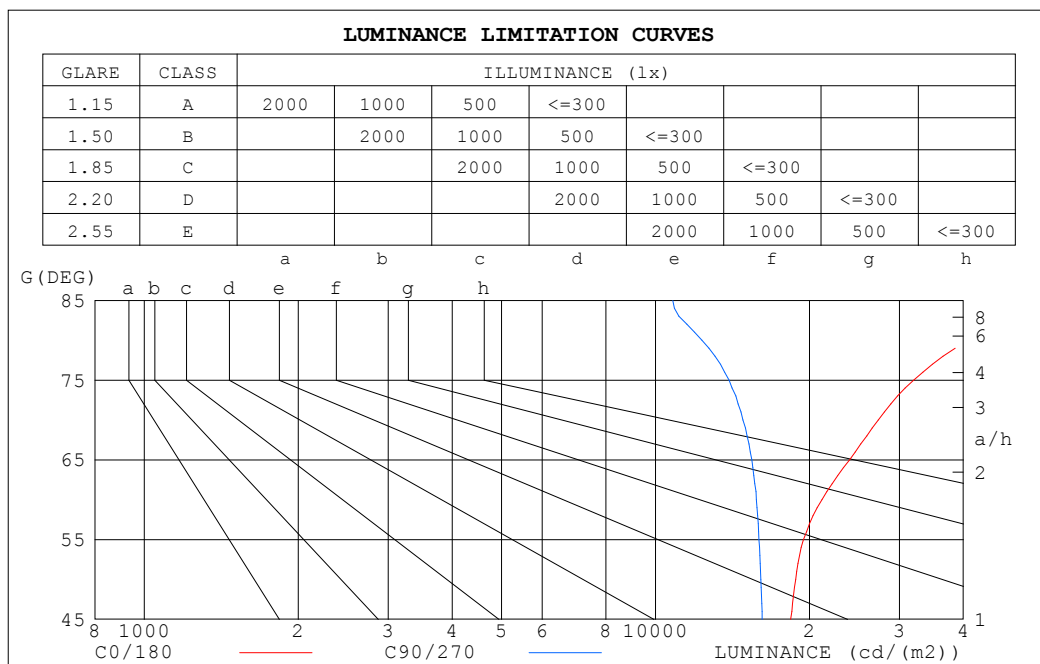
%lum = 61.6%

%lamp = 61.6%

C Range: 0 - 360DEG  
 C Interval: 90.0DEG  
 Test Speed: HIGH  
 Temperature:25.3°C  
 Operators:DAMIN  
 Test Date:26 November 2025

$\gamma$  Range: 0 - 180DEG  
 $\gamma$  Interval: 1.0DEG  
 Test System:EVERFINE GO-2000B\_V1 SYSTEM V2.00.459  
 Humidity:65.0%  
 Test Distance:8.186m [K=1.0000]  
 Remarks:

## LUMINANCE LIMITATION CURVES



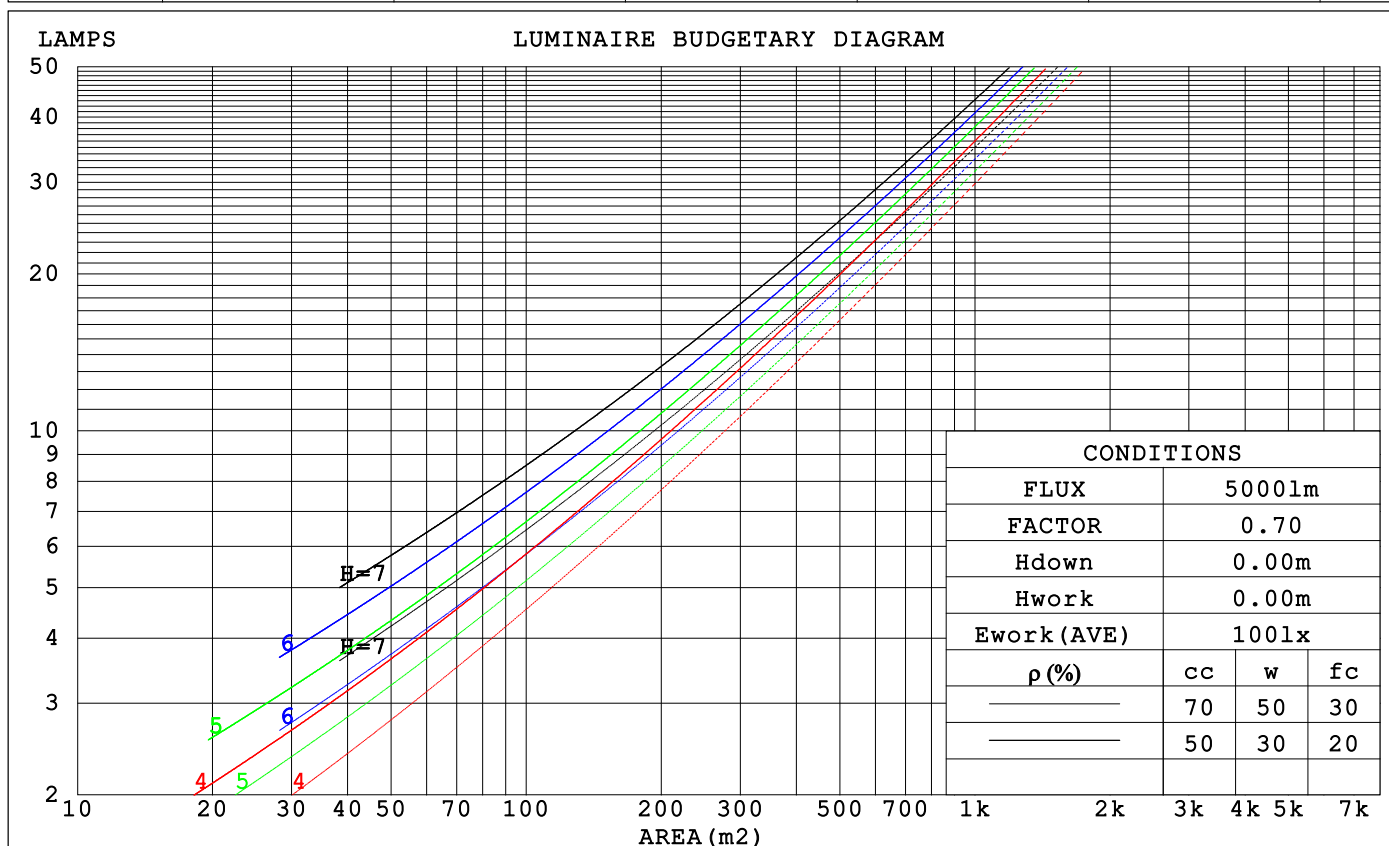
LUMINANCE cd/(m2)		
G (DEG)	C0/180	C90/270
85	60185	10814
80	40695	12330
75	31961	13927
70	27285	14817
65	23944	15425
60	21161	15749
55	19478	15926
50	18798	16071
45	18372	16161

C Range: 0 - 360DEG  
C Interval: 90.0DEG  
Test Speed: HIGH  
Temperature: 25.3°C  
Operators: DAMIN  
Test Date: 26 November 2025

γ Range: 0 - 180DEG  
γ Interval: 1.0DEG  
Test System: EVERFINE GO-2000B\_V1 SYSTEM V2.00.459  
Humidity: 65.0%  
Test Distance: 8.186m [K=1.0000]  
Remarks:

CU AND LUMINAIRE BUDGETARY ESTIMATE DIAGRAM

pcc	80%			70%			50%			30%			10%			0
pw	50%	30%	10%	50%	30%	10%	50%	30%	10%	50%	30%	10%	50%	30%	10%	0
pfc	20%			20%			20%			20%			20%			0
RCR	RCR:Room Cavity Ratio			Coefficients of Utilization(CU)												
0.0	1.16	1.16	1.16	1.12	1.12	1.12	1.05	1.05	1.05	.98	.98	.98	.92	.92	.92	.89
1.0	.98	.93	.89	.95	.90	.86	.89	.85	.81	.83	.80	.77	.77	.75	.73	.70
2.0	.84	.77	.70	.81	.75	.69	.76	.70	.65	.71	.66	.62	.67	.63	.59	.56
3.0	.73	.64	.57	.71	.63	.56	.66	.59	.54	.62	.56	.51	.58	.53	.49	.46
4.0	.64	.55	.48	.62	.54	.47	.58	.51	.45	.55	.48	.43	.51	.46	.42	.39
5.0	.57	.48	.41	.55	.47	.40	.52	.44	.39	.49	.42	.37	.46	.40	.36	.33
6.0	.51	.42	.35	.50	.41	.35	.47	.39	.33	.44	.37	.32	.41	.36	.31	.29
7.0	.46	.37	.31	.45	.36	.30	.42	.35	.29	.40	.33	.28	.38	.32	.27	.25
8.0	.42	.33	.27	.41	.33	.27	.39	.31	.26	.37	.30	.25	.35	.29	.24	.22
9.0	.39	.30	.24	.38	.30	.24	.36	.28	.23	.34	.27	.23	.32	.26	.22	.20
10.0	.35	.27	.22	.35	.27	.22	.33	.26	.21	.31	.25	.21	.30	.24	.20	.18



C Range: 0 - 360DEG  
 C Interval: 90.0DEG  
 Test Speed: HIGH  
 Temperature:25.3°C  
 Operators:DAMIN  
 Test Date:26 November 2025

γ Range: 0 - 180DEG  
 γ Interval: 1.0DEG  
 Test System:EVERFINE GO-2000B\_V1 SYSTEM V2.00.459  
 Humidity:65.0%  
 Test Distance:8.186m [K=1.0000]  
 Remarks:

### WEC AND CCEC

pcc	80%			70%			50%			30%			10%			0	
pw	50%	30%	10%	50%	30%	10%	50%	30%	10%	50%	30%	10%	50%	30%	10%	0	
pfc	20%			20%			20%			20%			20%			0	
RCR	RCR:Room Cavity Ratio						Wall Exitance Coefficients(WEC)										
0.0																	
1.0	.365	.208	.066	.355	.202	.064	.335	.192	.061	.317	.183	.059	.300	.174	.056		
2.0	.325	.178	.055	.315	.174	.054	.298	.165	.051	.281	.158	.049	.266	.151	.047		
3.0	.292	.155	.047	.283	.152	.046	.267	.145	.044	.253	.138	.042	.239	.132	.041		
4.0	.264	.137	.040	.257	.134	.040	.242	.129	.038	.229	.123	.037	.217	.118	.036		
5.0	.241	.123	.036	.234	.120	.035	.221	.115	.034	.209	.110	.033	.198	.106	.032		
6.0	.222	.111	.032	.215	.109	.031	.204	.104	.030	.193	.100	.029	.182	.096	.029		
7.0	.205	.101	.029	.199	.099	.028	.189	.095	.027	.179	.092	.027	.169	.088	.026		
8.0	.190	.093	.026	.185	.091	.026	.175	.088	.025	.166	.084	.024	.158	.081	.024		
9.0	.178	.086	.024	.173	.084	.024	.164	.081	.023	.155	.078	.022	.148	.075	.022		
10.0	.166	.080	.022	.162	.078	.022	.154	.075	.021	.146	.073	.021	.139	.070	.020		

pcc	80%			70%			50%			30%			10%			0	
pw	50%	30%	10%	50%	30%	10%	50%	30%	10%	50%	30%	10%	50%	30%	10%	0	
pfc	20%			20%			20%			20%			20%			0	
RCR	RCR:Room Cavity Ratio						Ceiling Cavity Exitance Coefficients (CCEC)										
0.0	.274	.274	.274	.234	.234	.234	.160	.160	.160	.092	.092	.092	.029	.029	.029		
1.0	.268	.239	.214	.229	.205	.184	.157	.141	.127	.090	.082	.074	.029	.026	.024		
2.0	.261	.216	.178	.224	.186	.154	.153	.129	.108	.088	.075	.063	.028	.024	.021		
3.0	.254	.199	.156	.217	.172	.135	.149	.119	.095	.086	.070	.056	.028	.023	.018		
4.0	.246	.187	.141	.211	.161	.123	.145	.112	.086	.084	.066	.051	.027	.021	.017		
5.0	.238	.176	.131	.205	.153	.114	.141	.107	.080	.082	.063	.048	.026	.020	.016		
6.0	.231	.168	.124	.198	.146	.108	.137	.102	.076	.079	.060	.045	.026	.020	.015		
7.0	.224	.162	.118	.192	.140	.103	.133	.098	.073	.077	.058	.043	.025	.019	.014		
8.0	.217	.156	.114	.187	.135	.100	.129	.095	.071	.075	.056	.042	.024	.018	.014		
9.0	.211	.151	.111	.181	.131	.097	.126	.092	.069	.073	.054	.041	.024	.018	.014		
10.0	.205	.147	.109	.177	.128	.095	.122	.090	.067	.071	.053	.040	.023	.017	.013		

C Range: 0 - 360DEG  
C Interval: 90.0DEG  
Test Speed: HIGH  
Temperature:25.3℃  
Operators:DAMIN  
Test Date:26 November 2025

γ Range: 0 - 180DEG  
γ Interval: 1.0DEG  
Test System:EVERFINE GO-2000B\_V1 SYSTEM V2.00.459  
Humidity:65.0%  
Test Distance:8.186m [K=1.0000]  
Remarks:

UGR(Unified Glare Rating) Table

ceiling/cavity		0.7	0.7	0.5	0.5	0.3	0.7	0.7	0.5	0.5	0.3
walls		0.5	0.3	0.5	0.3	0.3	0.5	0.3	0.5	0.3	0.3
working plane		0.2	0.2	0.2	0.2	0.2	0.2	0.2	0.2	0.2	0.2
Room dimensions		Viewed crosswise					Viewed endwise				
x = 2H y = 2H	2H	22.7	24.2	23.2	24.6	25.0	21.7	23.2	22.1	23.6	24.0
	3H	25.3	26.7	25.8	27.1	27.6	23.4	24.7	23.8	25.2	25.6
	4H	26.7	28.0	27.2	28.4	28.9	24.1	25.4	24.6	25.8	26.3
	6H	28.1	29.3	28.6	29.8	30.3	24.6	25.8	25.1	26.2	26.7
	8H	28.8	30.0	29.3	30.5	31.0	24.7	25.9	25.2	26.3	26.9
	12H	29.5	30.7	30.0	31.1	31.7	24.8	25.9	25.3	26.4	26.9
4H	2H	23.4	24.7	23.9	25.1	25.6	22.6	23.9	23.1	24.3	24.8
	3H	26.2	27.3	26.7	27.8	28.3	24.5	25.7	25.1	26.2	26.7
	4H	27.7	28.7	28.2	29.2	29.8	25.4	26.4	25.9	26.9	27.5
	6H	29.2	30.2	29.8	30.7	31.3	26.0	27.0	26.6	27.5	28.1
	8H	30.1	30.9	30.6	31.5	32.1	26.3	27.1	26.8	27.7	28.3
	12H	30.9	31.7	31.5	32.2	32.9	26.4	27.2	27.0	27.8	28.4
8H	4H	28.0	28.8	28.5	29.4	30.0	26.1	26.9	26.7	27.5	28.1
	6H	29.8	30.5	30.4	31.1	31.7	27.0	27.7	27.6	28.3	29.0
	8H	30.7	31.4	31.4	32.0	32.7	27.4	28.0	28.0	28.6	29.3
	12H	31.8	32.3	32.4	33.0	33.7	27.7	28.2	28.3	28.8	29.5
12H	4H	28.0	28.8	28.6	29.3	30.0	26.3	27.0	26.8	27.6	28.3
	6H	29.9	30.5	30.5	31.1	31.8	27.3	28.0	27.9	28.6	29.2
	8H	30.9	31.5	31.5	32.1	32.8	27.8	28.4	28.4	29.0	29.7
Variations with the observer position at spacings(CIE Pub.117):											
S = 1.0H		+ 0.1 / - 0.1					+ 0.1 / - 0.2				
1.5H		+ 0.2 / - 0.2					+ 0.2 / - 0.3				
2.0H		+ 0.2 / - 0.2					+ 0.2 / - 0.4				

CIE Pub.117, 1334 lm Total Lamp Luminous Flux Corrected (8log(F/F0) = 1.0)  
Area: 0.02 m2

C Range: 0 - 360DEG  
C Interval: 90.0DEG  
Test Speed: HIGH  
Temperature:25.3℃  
Operators:DAMIN  
Test Date:26 November 2025

γ Range: 0 - 180DEG  
γ Interval: 1.0DEG  
Test System:EVERFINE GO-2000B\_V1 SYSTEM V2.00.459  
Humidity:65.0%  
Test Distance:8.186m [K=1.0000]  
Remarks:

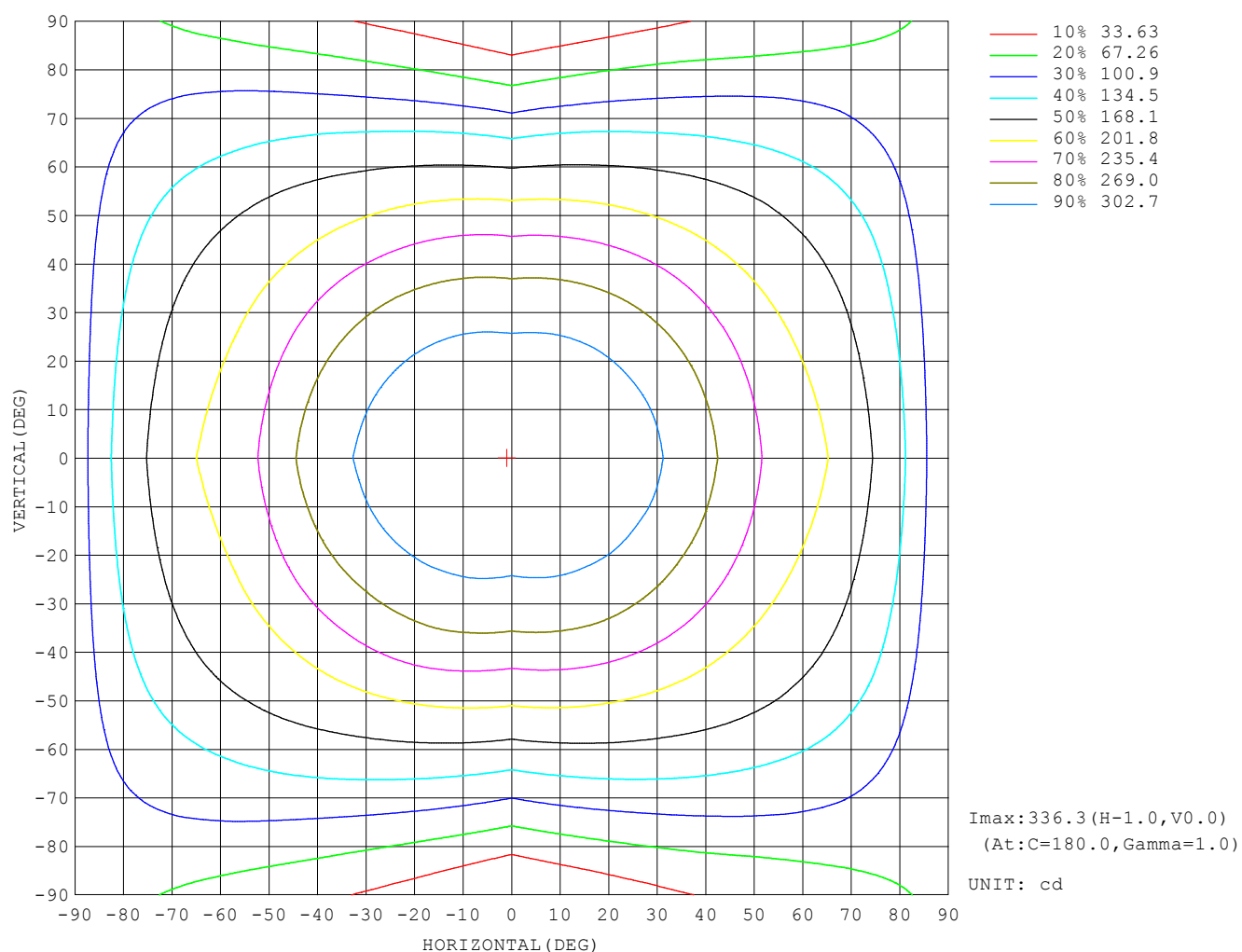
### UTILIZATION FACTORS TABLE

REFLECTANCE										
Ceiling	0.8	0.8	0.8	0.7	0.7	0.7	0.5	0.5	0.5	0
Walls	0.7	0.5	0.3	0.7	0.5	0.3	0.7	0.5	0.3	0
Working plane	0.2	0.2	0.2	0.2	0.2	0.2	0.2	0.2	0.2	0
ROOM INDEX	UTILIZATION FACTORS (PERCENT) $k(RI) \times RCR = 5$									
$k = 0.60$	51	39	32	50	38	31	48	38	31	24
0.80	60	48	40	59	47	40	56	46	39	31
1.00	68	56	48	67	55	47	63	56	46	38
1.25	75	63	55	73	62	55	69	60	53	44
1.50	80	69	61	78	68	60	74	65	58	49
2.00	88	77	70	85	76	69	80	72	66	56
2.50	92	83	75	89	81	74	84	77	71	60
3.00	96	87	80	93	85	79	87	81	75	64
4.00	100	93	87	97	90	85	91	86	81	69
5.00	103	97	92	100	94	89	93	89	85	72
ROOM INDEX	UF (total)									Direct
According to DIN EN 13032-2 2004			Suspended					SHRNOM = 1.25		

C Range: 0 - 360DEG  
C Interval: 90.0DEG  
Test Speed: HIGH  
Temperature: 25.3°C  
Operators: DAMIN  
Test Date: 26 November 2025

$\gamma$  Range: 0 - 180DEG  
 $\gamma$  Interval: 1.0DEG  
Test System: EVERFINE GO-2000B\_V1 SYSTEM V2.00.459  
Humidity: 65.0%  
Test Distance: 8.186m [K=1.0000]  
Remarks:

## ISOCANDELA DIAGRAM

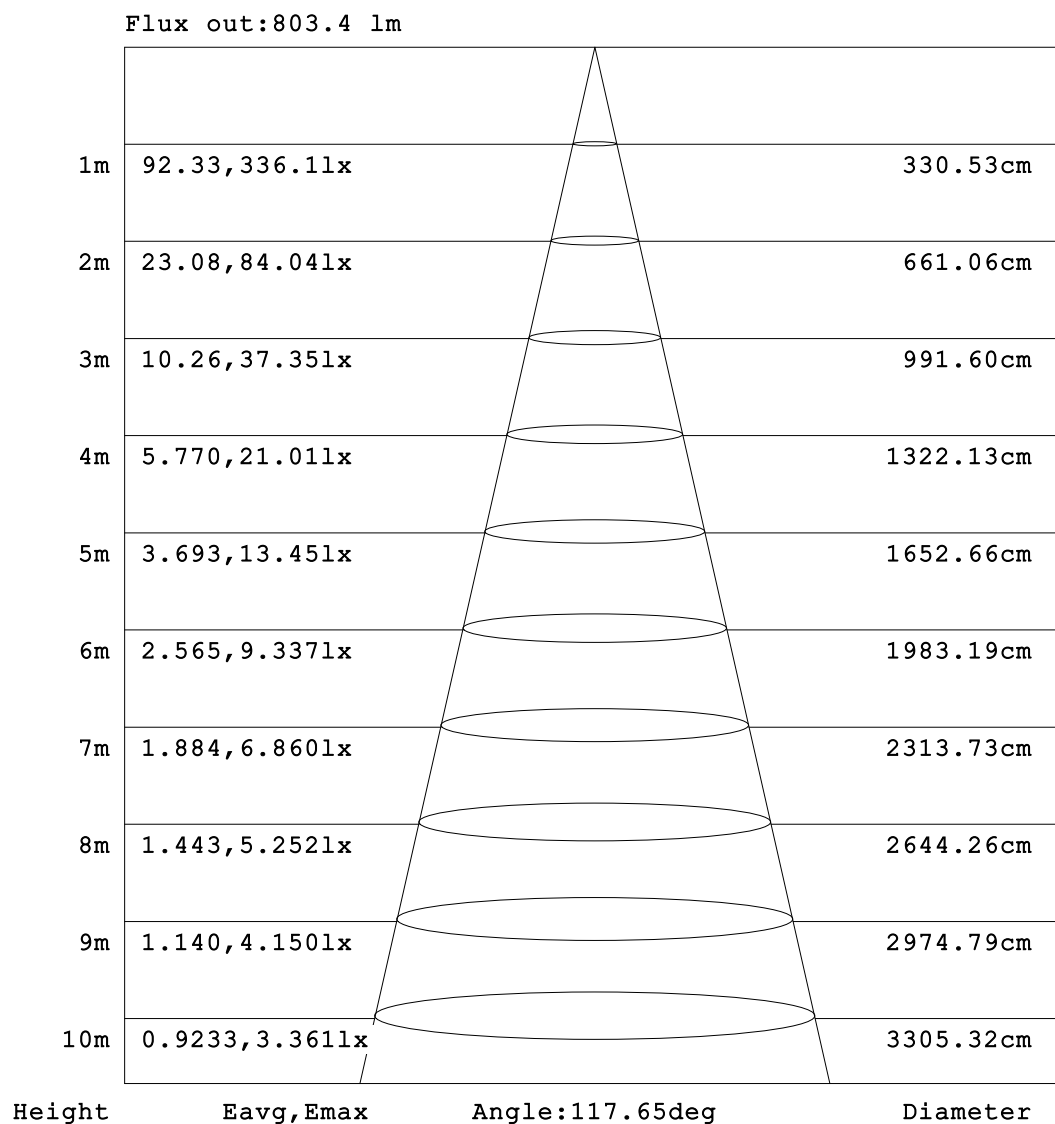


C Range: 0 - 360DEG  
C Interval: 90.0DEG  
Test Speed: HIGH  
Temperature: 25.3°C  
Operators: DAMIN  
Test Date: 26 November 2025

γ Range: 0 - 180DEG  
γ Interval: 1.0DEG  
Test System: EVERFINE GO-2000B\_V1 SYSTEM V2.00.459  
Humidity: 65.0%  
Test Distance: 8.186m [K=1.0000]  
Remarks:



### AAI Figure

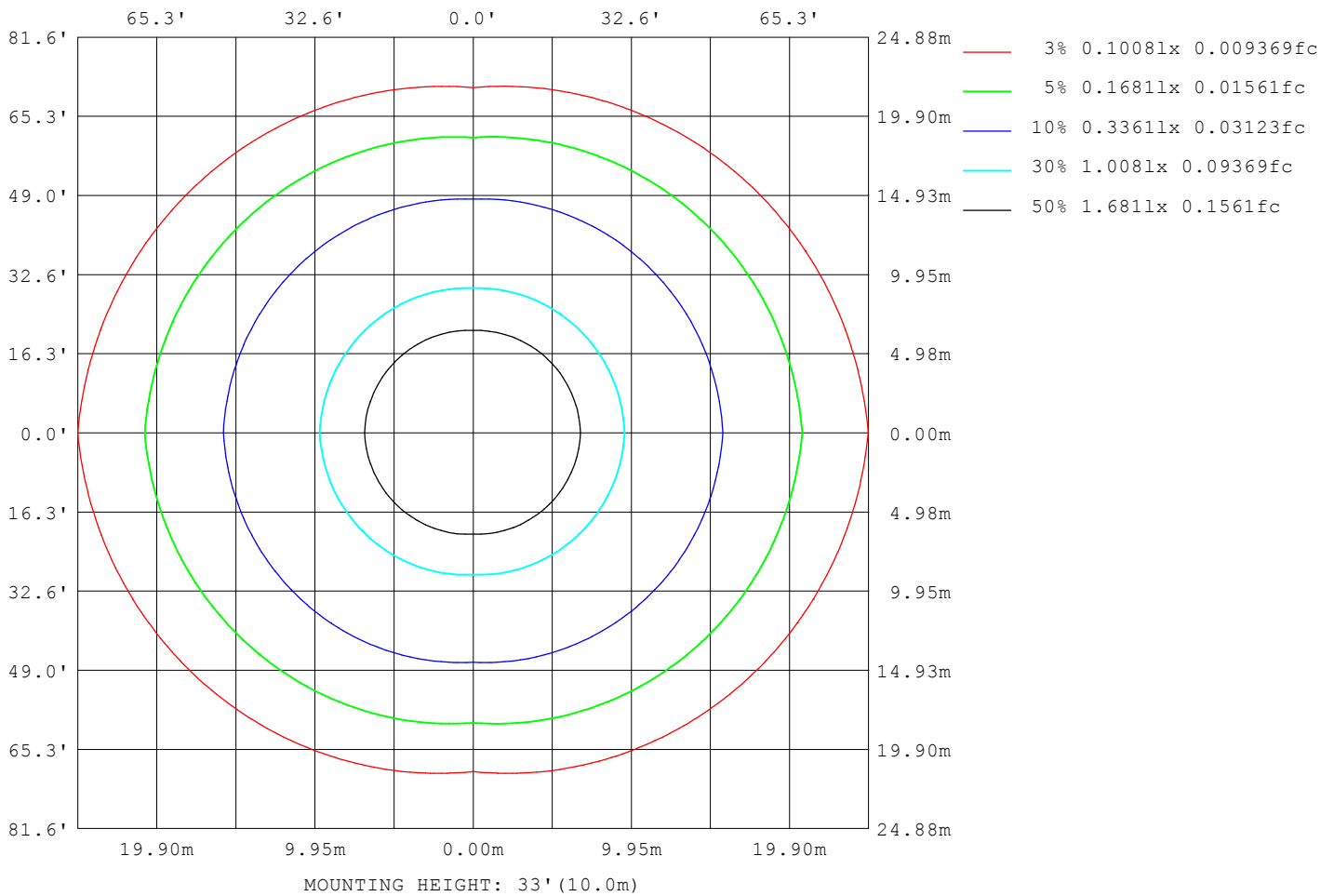


Note:The Curves indicate the illuminated area and the average illumination when the luminaire is at different distance.

C Range: 0 - 360DEG  
 C Interval: 90.0DEG  
 Test Speed: HIGH  
 Temperature:25.3°C  
 Operators:DAMIN  
 Test Date:26 November 2025

γ Range: 0 - 180DEG  
 γ Interval: 1.0DEG  
 Test System:EVERFINE GO-2000B\_V1 SYSTEM V2.00.459  
 Humidity:65.0%  
 Test Distance:8.186m [K=1.0000]  
 Remarks:

# ISOLUX DIAGRAM



C Range: 0 - 360DEG  
 C Interval: 90.0DEG  
 Test Speed: HIGH  
 Temperature: 25.3°C  
 Operators: DAMIN  
 Test Date: 26 November 2025

γ Range: 0 - 180DEG  
 γ Interval: 1.0DEG  
 Test System: EVERFINE GO-2000B\_V1 SYSTEM V2.00.459  
 Humidity: 65.0%  
 Test Distance: 8.186m [K=1.0000]  
 Remarks:

### LED Avg.L Report

Test:U:100.30V I:0.1630A P:14.500W PF:0.8820 Freq:50.00Hz Lamp Flux:1334.11x1 lm		
NAME:	TYPE:	WEIGHT:
SPEC.:	DIM.:	SERIAL No.:
MFR.: Everfine	SUR.:	Shielding Angle:

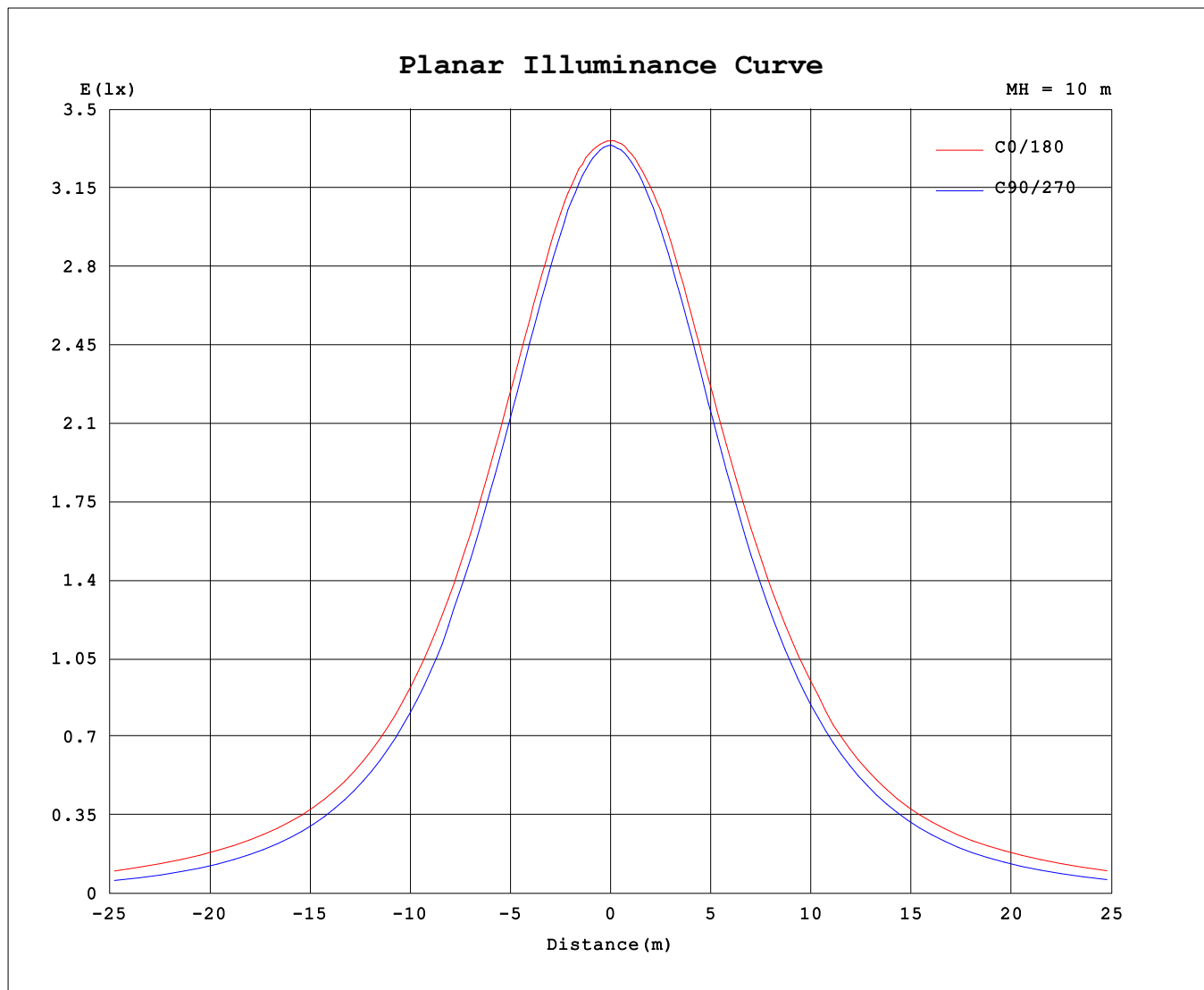
AvgL	cd/m2
L_0~180 (65) av	23908
L_0~180 (75) av	32337
L_0~180 (85) av	64027
L_90~270 (65) av	15942
L_90~270 (75) av	14450
L_90~270 (85) av	12383
L_45 (65) av	18927
L_45 (75) av	21181
L_45 (85) av	31990

Standard: GB/T 29293-2012

C Range: 0 - 360DEG  
C Interval: 90.0DEG  
Test Speed: HIGH  
Temperature:25.3℃  
Operators:DAMIN  
Test Date:26 November 2025

γ Range: 0 - 180DEG  
γ Interval: 1.0DEG  
Test System:EVERFINE GO-2000B\_V1 SYSTEM V2.00.459  
Humidity:65.0%  
Test Distance:8.186m [K=1.0000]  
Remarks:

## Planar Illuminance Curve



C Range: 0 - 360DEG  
C Interval: 90.0DEG  
Test Speed: HIGH  
Temperature: 25.3°C  
Operators: DAMIN  
Test Date: 26 November 2025

$\gamma$  Range: 0 - 180DEG  
 $\gamma$  Interval: 1.0DEG  
Test System: EVERFINE GO-2000B\_V1 SYSTEM V2.00.459  
Humidity: 65.0%  
Test Distance: 8.186m [K=1.0000]  
Remarks:

## LUMINOUS DISTRIBUTION INTENSITY DATA

Table--1

UNIT: cd

C (DEG) γ (DEG)	0	90	180	270															
0	336	334	336	334															
5	336	332	336	332															
10	335	328	334	329															
15	332	321	333	323															
20	325	312	327	315															
25	316	301	318	305															
30	306	288	309	291															
35	292	271	297	275															
40	277	248	283	258															
45	260	229	267	237															
50	242	207	244	216															
55	223	183	225	192															
60	212	157	210	166															
65	202	130	202	139															
70	187	101	189	107															
75	165	72.1	169	77.5															
80	141	42.8	148	48.8															
85	105	18.8	118	24.3															
90	72.9	5.60	82.1	6.39															
95	50.4	3.63	56.0	4.47															
100	40.2	3.76	43.8	4.60															
105	36.3	4.01	38.6	4.87															
110	33.9	4.47	35.1	5.14															
115	33.5	4.70	34.2	5.37															
120	34.7	5.02	33.9	5.59															
125	40.4	5.32	35.7	5.86															
130	49.4	5.60	41.7	6.12															
135	56.7	5.94	43.1	6.36															
140	61.1	6.29	45.7	6.57															
145	57.6	6.63	42.8	6.74															
150	48.9	6.95	33.7	6.89															
155	36.6	7.22	21.6	7.13															
160	26.4	7.44	9.02	7.32															
165	13.1	7.72	7.72	7.50															
170	7.98	7.97	7.68	7.64															
175	7.92	8.14	7.66	7.85															
180	7.90	8.12	7.92	8.13															

C Range: 0 - 360DEG

C Interval: 90.0DEG

Test Speed: HIGH

Temperature:25.3℃

Operators:DAMIN

Test Date:26 November 2025

γ Range: 0 - 180DEG

γ Interval: 1.0DEG

Test System:EVERFINE GO-2000B\_V1 SYSTEM V2.00.459

Humidity:65.0%

Test Distance:8.186m [K=1.0000]

Remarks: